

Contact: Lance Rehs  
Tel.: (212) 355-5710  
Cell Phone: (516) 633-4854  
Email: [lance@rehs.com](mailto:lance@rehs.com)  
Website: [www.rehscgi.com](http://www.rehscgi.com)

Release Date: August 15, 2017

## ARC SELECT 2017: CONTEMPORARY FIGURES

Rehs Contemporary is pleased to present *ARC Select 2017: Contemporary Figures*, an exhibition focusing on the stylistic variations of representing the human form in contemporary art. The subject of the human form and its depiction is a perennial theme, historically speaking... but are representational treatments of *the figure* still meaningful? Perhaps, it is the *only* form that retains its significance.

The exhibition opens on Saturday, October 28<sup>th</sup> from 2-8 PM at Rehs Contemporary Galleries, 5 East 57<sup>th</sup> Street 8<sup>th</sup> Floor, and will remain on view through November 17<sup>th</sup>, 2017. In conjunction with the Art Renewal Center, *Contemporary Figures* unites an impressive and diverse roster around some of the finest and most unique figurative artists producing work today. More than 25 paintings and drawings in all, will be on display by a group that includes: Emanuele Dascanio, Daniel Gerhartz, Vanessa Lemen, Sergio Lopez, Tim Rees, and Marc Scheff.

*Contemporary Figures* aims to highlight just a fragment of the expansive genre, while showcasing works that demonstrate immense talent and creativity. From the painstakingly precise, and near photographic charcoal and graphite renderings by Emanuele Dascanio, to the mesmerizing mixed media resin blocks by Marc Scheff, the exhibition displays a range of approaches and techniques in service of *the figure*. Daniel Gerhartz keeps his attention on the female form, with a strong foundation in the work of nineteenth century masters, most notably French and American Impressionist painters ranging from John Singer Sargent to Alphonse Mucha. Similarly, Sergio Lopez highlights the female form but takes the subject in a vastly different direction – influenced by the Golden Age Illustrators and graffiti writers. Tim Rees stresses compositional beauty, preferring to allow the composition to tell the story – the work is all about technique and using a thoughtful and logical approach to producing an idea. On the other hand, Vanessa Lemen credits her inspiration to moments of personal adversity and resilience – a concept that is further embodied by her organic process and the work itself; seemingly chaotic yet peaceful and elegant.

Each artist reveals not only a personal vision of the human figure, but a commentary on what he or she believes is important in our current environment – what is meaningful and what is significant.

For more information on the exhibition and opening event, please contact Lance Rehs, Director of Rehs Contemporary Galleries, Inc. at [212-355-5710](tel:212-355-5710) or [Lance@Rehs.com](mailto:Lance@Rehs.com).

Opening Event – October 28<sup>th</sup> 2-8 PM is open to the public

Prior to the public opening, Press Previews will be available by appointment on Friday, October 27<sup>th</sup> and Saturday, October 28<sup>th</sup>.



Emanuele Dascanio – *Night Don't Exist*



Marc Scheff - *Reveal*





Daniel Gerhartz - *Wisp of Scarlet*

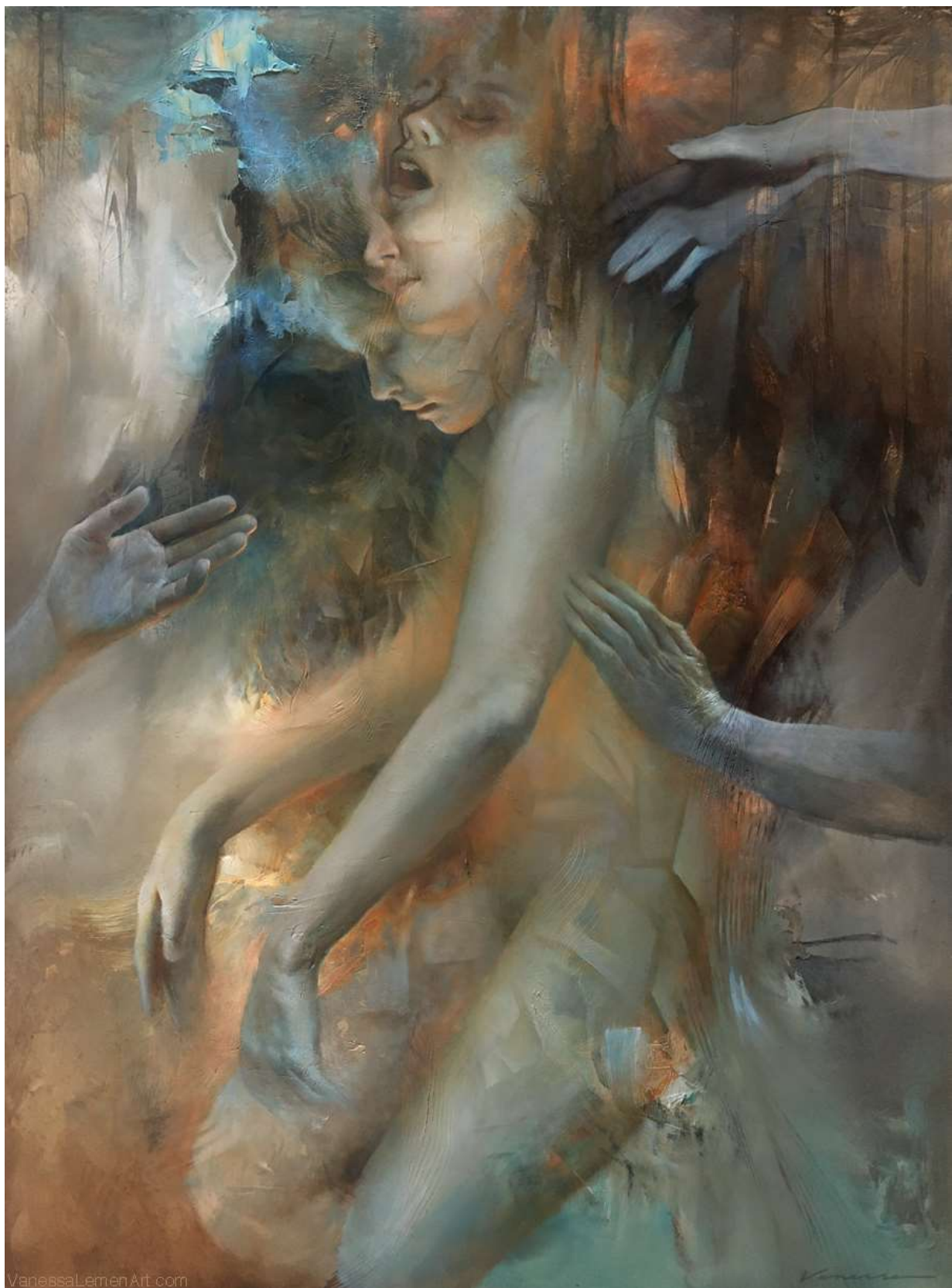


Sergio Lopez – *Painted Roses*





Tim Rees - *Dust and Drums, Dance of the Fulan*



Vanessa Lemen - *Promise*